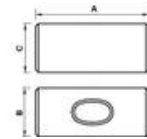



## MASON'S CLUB HAMMER Réf.: 0127100401

### Caracteristics

Sharp edges. High carbon steel head C45E. Forged head, with induction heat treatment of working surfaces (54 HRC). Working parts finely polished. Electrostatic powder epoxy powder, followed by baking. Straight fitting, realized by a hydraulic machine, a force sensor measures on each product unitarily the power of fitting, then a pressure sensor controls the setting up of the resin. Pullout performance is much higher than standard and is the hallmark of MOB tooling.



### Product data

Tête g / Head g	A mm	Bmm	C mm	Garantie (nb d'année) / G	L mm	Ref.		Code EAN
1000	95	36	42	E	250	0127100401	1	3303800127098
1250	100	41	45	E	250	0127120401	1	3303800127180
1500	100	44	50	E	260	0127150401	1	3303800127289



**NOVALIA SAS** 2 rue de Bergognon 42500 LE CHAMBON F. FRANCE - [www.novalia.pro](http://www.novalia.pro)  
**PEDDINGHAUS** Handwerkzeuge In der Graslake 35 58332 Schwelm DEUTSCHLAND - [www.peddinghaus.de](http://www.peddinghaus.de)  
**NOVALIA SA** Str. Narciselor nr.50 500251 - Braşov ROMÂNIA [www.mob-ius.ro](http://www.mob-ius.ro)  
**NOVALIA ESPAÑA** Portuete 51, of.204 20018 San Sebastián